

GEM360[®]



CUSTOM CONTAINER MODIFICATIONS

GEM 360 is a supplier of commercial and industrial equipment. Our product lines include standard and custom ISO containers, trailers, dry vans, reefers, and fabricated housings to enclose work & personnel processes, containerized battery energy storage systems (CBESS), electrical power generators, water treatment systems, power distribution equipment, and UPS & Switch Gear Lineups.

Our worldwide client base includes end users, manufacturers, EPCs, distributors, and general & sub-contractors with interests in all levels of public, private, civilian, military and government market segments.

GEM 360's product lines include standard and custom ISO containers and enclosures. Typical product applications include:

- Container Modification
- Power Generation
- Energy Storage
- Power Distribution
- Water Treatment
- Security Turnstiles
- Work Boxes
- Retail Solutions

CUTTING, STAIRS, FRAMING & STACKING

CUSTOMIZED EXTERIORS

MULTIPLE OPTIONS FOR DOORS

FINISHED INTERIOR EXAMPLES

INTERIOR WALLS & MATERIAL EXAMPLES

INTERIOR FLOOR OPTIONS

ENGINEERING & ELECTRICAL INSTALLATION

INSULATION CHOICES

CUSTOMIZED SHELVING OPTIONS

HVAC & CLIMATE CONTROL

SURFACE PREPARATION & PAINT

GRAPHICS & BRANDING

ISO Shipping containers are built strong and maintain their structural integrity allowing for many permutations and applications. Allowing for cutting, reinforcing, and stacking for multi-level configurations. Our design and engineering group has many years of container build experience and expertise to provide guidance through the design, engineering, and manufacturing.

1 - Stacking Ability

2- Cutting and Reinforcement

3 - Interior Stairs

4 - Multi-level Configuration

5 - Reinforced Roof and Stair System

1



2



3



5



4



GEM 360 routinely creates unique exteriors to meet the client's vision and requirements. From simple mobile containerized offices to retail solutions, kitchens, and creating training environments for our armed forces. Our design follows function to manufacture mobile solutions that are both attractive and function well.

1 - Training Unit

2- Exterior Sheet Metal Skin

3 - Mobile Generator Enclosure

4 - Retail Vending and Kitchen Container

5 - Tiny House Build

6 - Mobile Office Building

1



2



3



4



5



6



To meet the project requirements during the design, process the type and placement of doors is very important. There are a wide variety of options. Container doors can roll-up, swing open, hydraulically lift up, slide and open conventionally. The key to a successful choice is determining the anticipated use, weather conditions where the product will be located, and security requirements.

- 1 - Secure Inner Door - Dual Swing Open Doors
- 2 - Dual Roll-Up Doors
- 3 - Swing-Up-Hydraulically Lifted
- 4 - Standard Roll-Up Door
- 5 - Commercial Steel Door
- 6 - Sliding Doors
- 7 - Multiple Roll-Up Doors and Window

1



2



3



4



5



6



7



The interior of the container largely determines its mission. GEM 360 provides almost unlimited options for what can be built inside an ISO shipping container. Your specific requirements and intended final use of the container(s) contribute to both time and budget. Plumbing, electrical design, and placement are important factors not to be overlooked. Communication is key to the success of the project and we pride ourselves as being good listeners and our paying attention to detail.

- 1 - Custom Lavatories
- 2 - Kitchen Cabinetry
- 3 - Power Distribution
- 4 - Tele Health Office
- 5 - Work Office
- 6 - Retail Vending Container
- 7 - Personal Use Option
- 8 - Secure Meeting Office



1



2



3



4



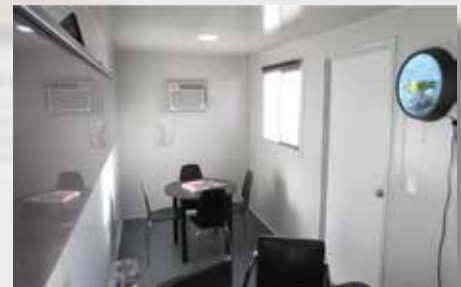
5



6



7



8

The materials that will be chosen for the interior walls are important choices and should dovetail with the functionality of the container. There many materials that can be used such as Plywood, Drywall, FRP, Aluminum, and Perforated Steel to name just a few. Choice considerations include accessibility to mechanicals, weather & location of the finished container, pests, need for a sterile environment, and sound attenuation.

- 1 -Painted Plywood Walls
- 2- FRP Walls Wlth Security Gate
- 3 - Perforated Steel Walls
- 4 - Painted FRP Walls
- 5 - FRP Ceiling
- 6 - Galvanized Steel Stud Structure
- 7- Aluminum Walls
- 8 - Wood Paneling

1



2



3



4



5



6



7



8



Aluminum, Vinyl, Rubber and Marine-grade plywood flooring are common ISO Container flooring, but your needs may be more sophisticated and nuanced. Floor choice should take into consideration anticipated traffic flow, ease of cleaning, wear, and how the flooring options relate to the functionality of the finished container. Keep in mind that some flooring options are to meet building codes, especially if hygiene and food are involved. A good flooring option also contributes to the overall look and impression of the interior.

1 - Aluminum Treadplate

2 - Aluminum Floor

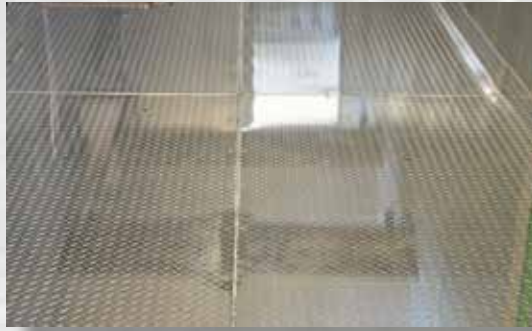
3 - Epoxy Floor

4 - Rubberized Coin Dot Flooring

5 - Faux Wood Flooring

6 - Vinyl Floor Covering

1



2



3



4



6



5



GEM 360 has perhaps the most experience and expertise in the industry when it comes to the engineering and installation of electrical systems for containers. From control panels to power generation and power distribution GEM 360 has done it all. Besides designing for the primary functionality as required, experience tells us to also provide failsafe options. Unfortunately, when electrical fails an expensive investment can become a storage unit overnight. Our experience, design, engineering and quality installation prevent this from occurring.

- 1 - Generator Control Cabinet
- 2 - Experienced & Qualified Install
- 3 - Batteries Installed CBESS Container
- 4 - Power Distribution
- 5 - Class 1 DIV 2 System
- 6 - Dual Feed Load Center
- 7 - Generator Breaker
- 8 - Exterior Receptacle



The type and amount of insulation needed for interior container walls depend on certain factors such as the climate where the container will be located, the working or living conditions of personnel or visitors, and the temperature and humidity condition limitations and requirements of equipment, components, and assets that will be inside the container. Additionally, another factor may be the ultimate sound attenuation quality of those who work inside the container.

- 1 - Fiberglass Acoustical Insulation
- 2- Mineral Wool Insulation
- 3 - Rigid Foam Insulation Board
- 4 - Spray Foam Insulation
- 5 - Fiberglass Insulation

1



2



3



4



5



Containers are used for multiple applications, many of which require some form of storage or organizational shelving. Shelving is needed to save valuable floor space, as economical storage solutions for electricians and plumbers for materials and to simply keep boxes off the container floor. GEM 360 also designs and fabricates custom workbench and cabinetry solutions for kitchens, mobile labs, and mobile offices.

- 1 - Dual Metal Shelving
- 2- Rigging Equipment Storage
- 3 -Custom Shelving and Cabinets
- 4 - Pipe Rack Options
- 5 - 1.5' Wide Shelving on 3 Sides
- 6 - Larger Storage Capacity

1



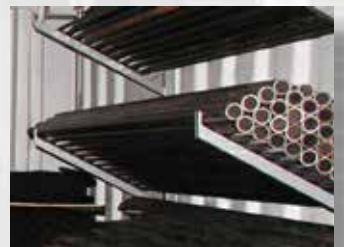
2



3



4



5



6



Heating, cooling and venting are all important items to have control over especially if the installed equipment is sensitive to a temperature range of heat or cooling and has specific airflow needs. Sensitive electronic equipment such as servers and delicate instrumentation may require more than just through the wall air conditioners. GEM 360 routinely installs industrial HVAC units that control temperature, venting as well as humidity. They design and install HVAC solutions from routine to scientific, to health to military and industrial.

- 1 - Recess Mounted HVAC
- 2- Exterior Mounted HVAC Unit
- 3 - Generator Louver Venting
- 4 - Ductless Split System
- 5 - HVAC Supply Ducting
- 6 - Exhaust Fan System
- 7- Lab Exhaust-Vent Hood With Seismic Bracing



GEM 360 reconditions older containers giving them a new life. Part of that process is removing the old layers of paint and graphics then properly preparing the container surface and applying a professional paint job. To remove the old paint and baked on vinyl graphics GEM 360 utilizes a Dustless Blaster that ecologically and safely removes and prepares the surface for primer, paint, and graphics, if called for in the project requirement.

1 - Layers of Peeling Paint

2- Paint Removal

3 -Dustless Blaster

4 - Need to Change Paint Color

5 - Paint Color Changed and Metal Sign Affixed to The Container

6 - Before and After Example

1



2



3



4



5



6



When work on a custom container is completed the exterior can either be kept plain with a traditional beige paint color or used as a sign to call attention to the brand or what is inside the container. Custom paint colors and vivid vinyl graphics can be applied that will deliver a branded message or simply announce the brand with just its logo, using simple vinyl cut graphics. Similar to automobiles and trailers containers can also be wrapped for maximum visual appeal. A strategic partner processes and prints the graphics and the GEM 360 teams installs them.

- 1 -Vinyl Wrapped Graphics Package
- 2- EVinyl Graphics and Custom Paint
- 3 - Multi-Color Vinyl Cut Logo Graphics
- 4 - Simple One Color Vinyl Graphics
- 5 - Vinyl Cut Graphics
- 6 - Logo Graphics Applied

1



2



3



4



5



6





7650 NW 50TH ST
Miami, FL 33166

info@gem360.net
www.gem360.net

Michael Mathon
314.267.9955
mmathon@gem360.net

- Container Modification
- Power Generation
- Energy Storage
- Power Distribution
- Water Treatment
- Security Turnstiles
- Work Boxes
- Retail Solutions

CUSTOM CONTAINER MODIFICATIONS